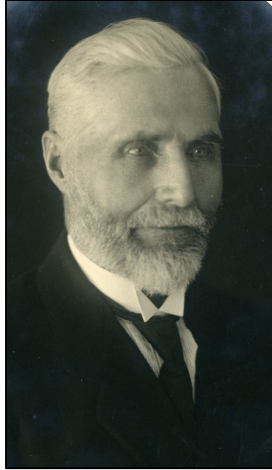


- The Nelson Family History -

8. Gustav Ericsson

(farfars far)



* 1850-03-22 ?, Nedre Ulleruds parish, Värmland.

He was a farmer in Mosserud, Nedre Ulleruds parish.

Married Anna Cajsa Andersdotter (No 9) 1882-11-10 in Alsters parish, Värmland.

After his first wife had died Gustav remarried Lovisa Skeppstedt, the farmers daughter on the farm next to Mosserud, the farm Ed, also called "Edet".

† 1940-04-30 Mosserud, Nedre Ulleruds parish, Värmland.

2nd marriage 1897-10-11 in Nedre Ulleruds parish, Värmland to:

Lovisa Skeppstedt

* 1857-05-17 Mölnbacka, Nedre Ulleruds parish, Värmland.

† 1949-11-23 Lövnäs 1:58, Hammarö, Värmland.

Children:

- Karin Matilda Alice * 1904-02-28 Mosserud, Nedre Ullerud, Värmland.
† 1904-05-14 Mosserud, Nedre Ullerud, Värmland.

A-08